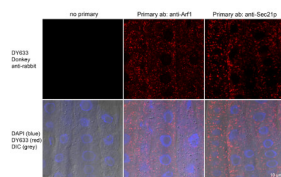


Product no **AS12 2034****Donkey anti-Rabbit IgG (H&L), DyLight® 633 conjugated, min x w/bovine, chicken, goat, guinea pig, hamster, horse, human, mouse, rat, sheep IgG****Product information**

Immunogen	Purified Rabbit IgG
Host	Donkey
Clonality	Polyclonal
Purity	Immunogen affinity purified donkey IgG.
Format	Lyophilized
Quantity	1 mg
Reconstitution	For reconstitution add 1,1 ml of sterile water, Let it stand 30 minutes at room temperature to dissolve, Prepare fresh working dilutions daily
Storage	Store lyophilized material at 2-8°C. Product is stable for 4 weeks at 2-8°C after rehydration. For long time storage after reconstitution, dilute the antibody solution with glycerol to a final concentration of 50% glycerol and store as liquid at -20°C, to prevent loss of enzymatic activity. For example, if you have reconstituted 1 mg of antibody in 1,1 ml of sterile water add 1,1 ml of glycerol. Such solution will not freeze in -20°C, If you are using a 1:5000 dilution prior to diluting with glycerol, then you would need to use a 1:2500 dilution after adding glycerol. Prepare working dilution prior to use and then discard. Be sure to mix well but without foaming.
Additional information	<p>Conjugate is present in 10 mM Sodium Phosphate, 0.15 M Sodium Chloride, pH 7.2, 1 % (w/v) BSA, Protease/IgG free. 0.05 % (w/v) sodium azide is added as preservative.</p> <p>Based on immunoelectrophoresis, no reactivity is observed to: non-immunoglobulin rabbit serum proteins IgG from bovine, chicken, goat, guinea pig, hamster, horse, human, mouse, rat.</p> <p>Based on immunoelectrophoresis, this antibody reacts with: () chains on rabbit IgG light chains on all rabbit immunoglobulins.</p>

Application information**Recommended dilution** | 1 : 20-1 : 2000 for most applications**Additional information** | **immunolocalization**

Donkey anti-rabbit conjugated to DY Light 633 in the absence of primary antibody show very little background label (right image) and binds to primary antibodies (anti-Arf1 and anti-Sec21p; two left images). The top images show only the antibody label in red and bottom images show overlay of antibody label in red with DAPI in blue and DIC/Nomarski image in grey. The material has been prepared using whole mount immunolabelling procedure of 5 day old *Arabidopsis thaliana* seedlings (Fischer, U. et al. (2006). *Curr. Biol.* 16, 2143–2149). Antibody dilutions: rabbit anti-sec21p (Agrisera, [AS08 327](#)) 1:1000, rabbit anti-Arf1 (Agrisera, [AS08 325](#)) 1:1000 and Agrisera Donkey anti-rabbit DY Light 633 1:100. DNA was stained with DAPI.

Courtesy: Dr. Anna Gustavsson and Prof. Markus Grebe, Umeå Plant Science Centre